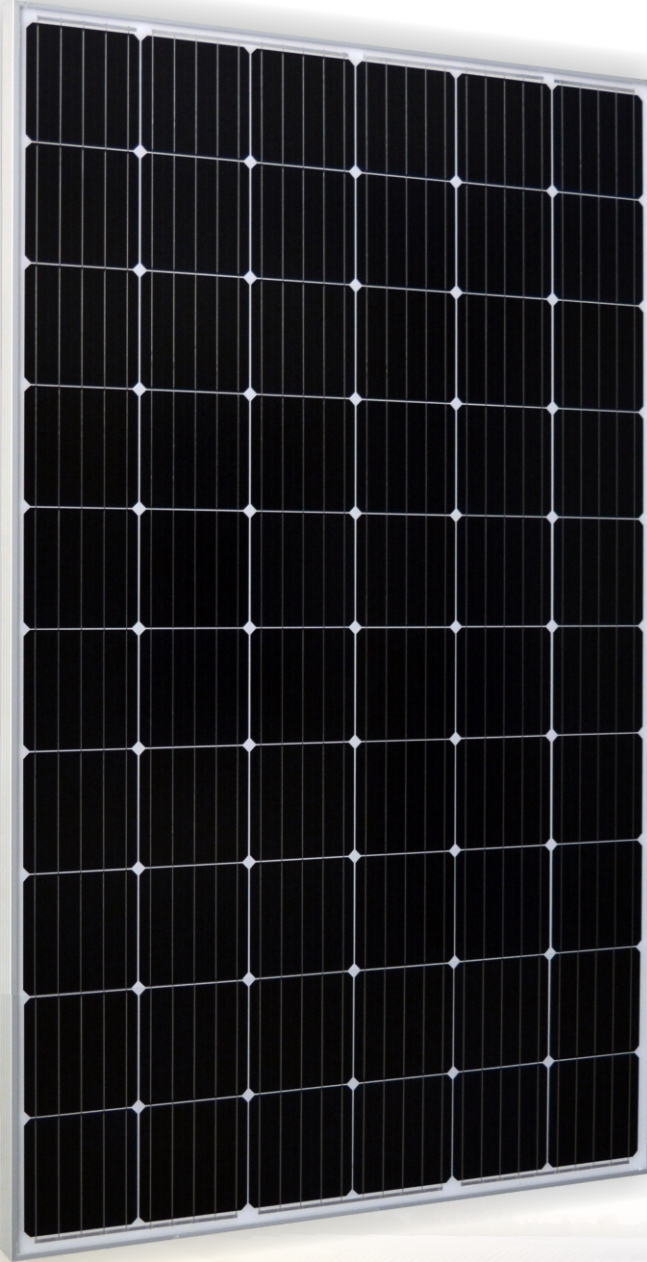


ST60MP

60x6"/305-320 W MONOKRİSTAL PERC PANEL
60x6"/305-320 W MONOCRYSTALLINE PERC PANEL

SOLENTAD
SOLAR ENERGY



Management System

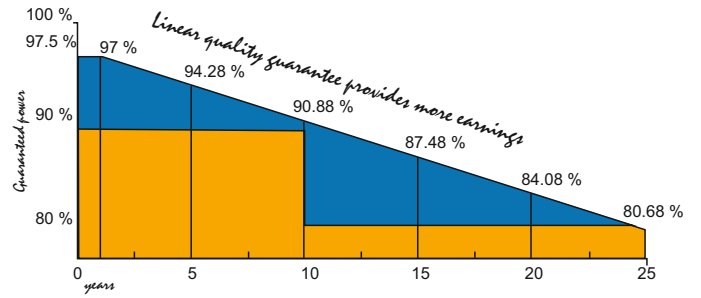


- ISO 9001 : Quality Management System
- ISO 14001 : Environmental Management System Standard
- OHSAS 18001 : International Occupational Health and Safety Assessment System Standard
- ISO 10002-2004: Customer Satisfaction Management System

Product Certification



- IEC 61215 (New Edition) 1500 vdc
- IEC 61730 (New Edition)
- IEC 61701 (Salt Mist Corrosion)
- IEC 62716 (Amonia Corrosion)
- IEC 62804 (Potential Induced Degradation)



Product Quality & Process Guarantee



Linear Power Guarantee



Testing Laboratory



LINEAR MANAGEMENT SOLUTIONS

Structural Characteristics

Module dimensions (Ölçüler)	1640 x 992 x 35 mm
Weight (Ağırlık)	17.5 kg
Cell (Hücre)	Monocrystal 156.75 x 156.75 mm (60 cells)
Glass (Cam)	3.2 mm AR tempered glass, low iron
Frame (Çerçeve)	Anodized aluminum alloy
Junction Box (Bağlantı Kutusu)	IP67
Output Wire (Kablo Ölçüsü)	4.0 mm ² , wire length: 1100 mm
Connector (Konnektör)	Mc4 Compatible
Mechanical Load (Mekanik Yük)	5400 Pa



Specifications are subject to change without prior notice

www.solentad.com.tr

Electric Characteristics (STC)(Elektrik Özellikleri)

Model of Modules	305-60M	310-60M	315-60M	320-60M
Maximum power - P_{mp} (W)	305	310	315	320
Open-circuit voltage - V_{oc} (V)	40.29	40.51	40.71	40.74
Short-circuit current - I_{sc} (A)	9.75	9.85	9.87	9.90
Maximum power voltage - V_{mp} (V)	33.39	33.48	34.43	35.45
Maximum power current - I_{mp} (A)	9.16	9.26	9.15	9,34
Module efficiency - η_m (%)	18.4	18.7	19.0	19.60

STC: Irradiance 1000 W/m², 25 °C, AM 1.5

Electric Characteristics (NOCT)(Elektrik Özellikleri)

Model of Modules	305-60M	310-60M	315-60M	320-60M
Maximum power - P_{mp} (W)	244	248	252	256
Open-circuit voltage - V_{oc} (V)	37,47	37,67	37,86	37,89
Short-circuit current - I_{sc} (A)	7,82	7,90	7,90	7,94
Voltage at maximum power - V_{mp} (V)	31,05	31,14	32,02	32,97
Current at power maximum power - I_{mp} (A)	7,35	7,43	7,34	7,49

NOCT: Irradiance 800 W/m², 20 °C, wind velocity 1m/s

Power Tolerance (W)	(0,+5)
Maximum system voltage (V)	1000 V / 1500 V
Maximum rated fuse current (A)	15 A / 20 A
Security Class	C Class

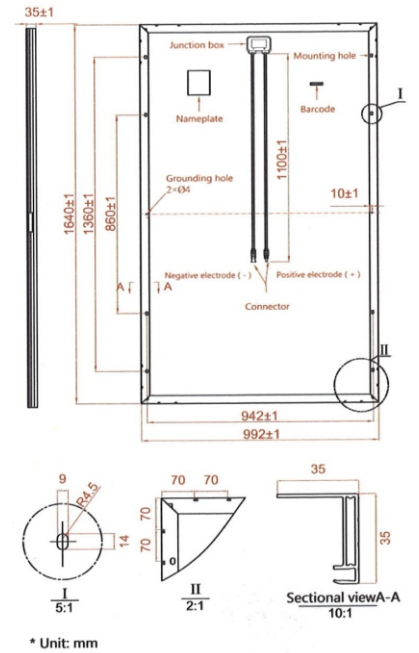
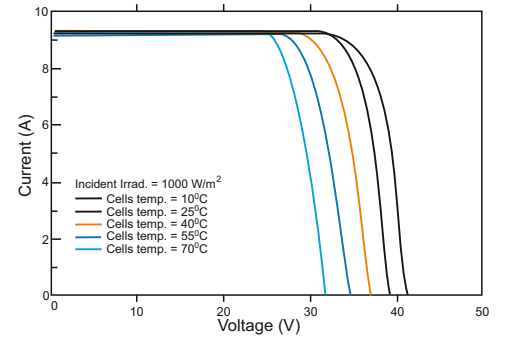
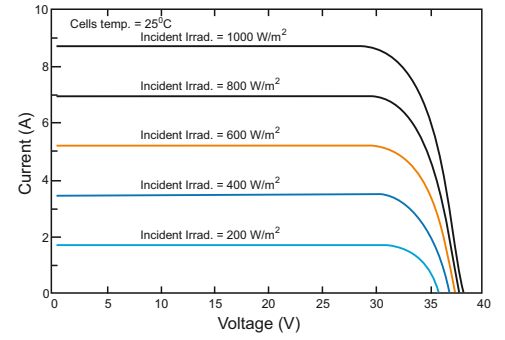
Temperature Characteristics (Isısal Kayıplar)

Temperature coefficient at maximum power	-0,393 (%/°C)
Temperature coefficient at open - circuit voltage	-0,277 (%/°C)
Temperature coefficient at short - circuit current	+0,043 (%/°C)
Operating temperature	-40~+85 °C
Rated operating temperature of cells	45±2 °C

Packaging Configuration (Yükleme Bilgisi)

Container	20 GP	40 GP	40 HC
Quantity/Pallet	30	30	30
Pallets/Container	14	28	28
Quantity/Container	420	840	840

Curves



Safety



Resistance to salt-spray corrosion (IEC61701, certified to SGS test standart)



Resistance to ammonia corrosion (IEC62716, certified to SGS test standart)



Fire safety (Class C, certified to SGS test standards)

Reliability



Resistance to power attenuation passed SGS system voltage endurance test

High performance



Excellent power output of modules in low light environment



100% double EL test enabling remarkable reduction of hidden crack rate of modules